

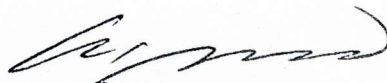
**CERTIFICATE OF ANALYSIS**

APPLICANT : YEON JE TECH CO.,LTD  
PRODUCT : ESOL N50-S  
SAMPLING DATE : 27TH FEBRUARY 2009  
SAMPLE TESTED DATE : 27TH FEBRUARY 2009  
L/C REF. : 0454Z00158  
REPORT NO. : YL-30/2009-0835

THE FOLLOWINGS ARE THE RESULTS OF ANALYSIS PERFORMED BY SGS LABORATORY WITH THE SAMPLE(S) OF CONTAINER DRAWN BY SGS INSPECTOR.

TEST ITEM	TEST METHOD	SPECIFICATION	RESULT
COLOR, APHA	ASTM D 1209	MAX. 50	25
SPECIFIC GRAVITY( @60°F)	ASTM D 1298	1.025-1.045	1.042
VISCOSITY (@40°C), cSt	ASTM D 445	80-120	113.1

YOSU, 02ND MARCH 2009



SGS KOREA CO., LTD.  
OIL, GAS & CHEMICALS SERVICES

JHC / jsp

- 1) Test performed in accordance with the latest issue of relevant test method unless otherwise indicated.
- 2) Precision parameters apply in the determination of the above results. Also refer to ASTM D3244-97(2002), IP 367 & Appendix E of IP Standard Methods for Analysis & Testing, for utilization of test data to determine specifications conformance.
- 3) This report shall not be reproduced except in full, without the written approval of the laboratory

"This report is issued by the Company under its General Conditions for Inspection and Testing Services (copy attached). The issuance of this report does not exonerate buyers or sellers from exercising all their liabilities under the Contract of Sale. Stipulations to the contrary are not binding on the Company. The Company's responsibility under this report is limited to proven negligence and will no case be more than ten times the amount of the fees or commission. Except by special arrangement, samples if drawn, will not be retained by the Company for more than three months."

**SAMPLING REPORT**

APPLICANT : YEON JE TECH CO.,LTD  
PRODUCT : ESOL N50-S  
SAMPLING DATE : 27TH FEBRUARY 2009  
SAMPLE TESTED DATE : 27TH FEBRUARY 2009  
L/C REF. : 0454Z00158  
REPORT NO. : YL-30/2009-0835

FOLLOWING SAMPLES WERE DRAWN BY SGS INSPECTOR AT REQUEST OF YEONJE TECH CO.,LTD.  
AT KWANG YANG TERMINAL, FOR THE PURPOSE OF SAMPLING & TESTING OF THE ABOVE  
MENTIONED CARGO.THE DETAILS AS FOLLOWS :

CONTAINER NO.	TYPE OF SAMPLE	QUANTITY	SGS SEAL NO.	REMARKS
PCIU347900	COMPOSITE	0.5L X 1	-	FOR ANALYSIS BY US
PCIU347900	COMPOSITE	0.5L X 1	733919	FOR RETENTION BY SGS

REMARK : The retention samples would be kept for 3 months from the date of sampling.  
Unless otherwise advised, the retention samples shall be disposed off after the period of retention.

YOSU, 02ND MARCH 2009



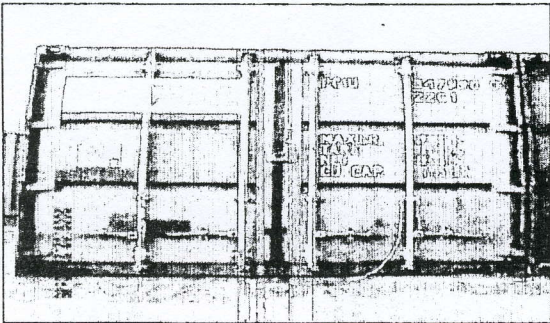
SGS KOREA CO., LTD.  
OIL, GAS & CHEMICALS SERVICES

gty / GTY

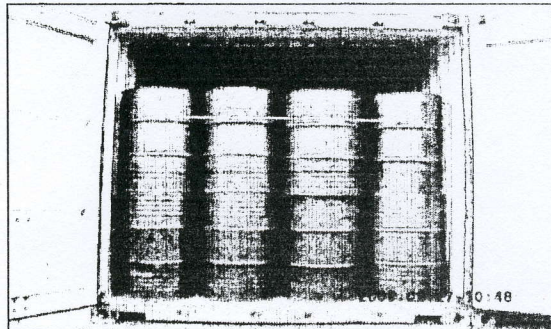
## ATTACHED PHOTOGRAPHY

APPLICANT : YEON JE TECH CO.,LTD  
PRODUCT : ESOL N50-S  
SAMPLING DATE : 27TH FEBRUARY 2009  
SAMPLE TESTED DATE : 27TH FEBRUARY 2009  
L/C REF. : 0454Z00158  
REPORT NO. : YL-30/2009-0835

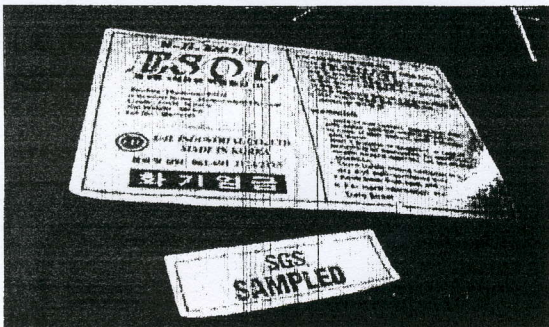
1) Closed container door & Seal condition



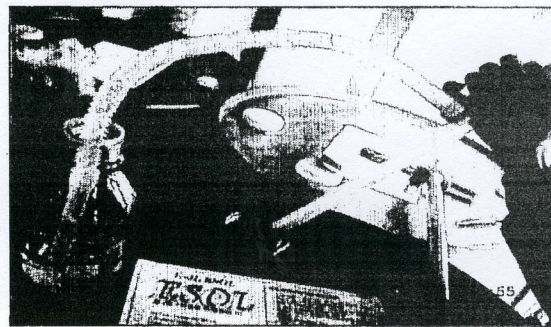
2) Open the door



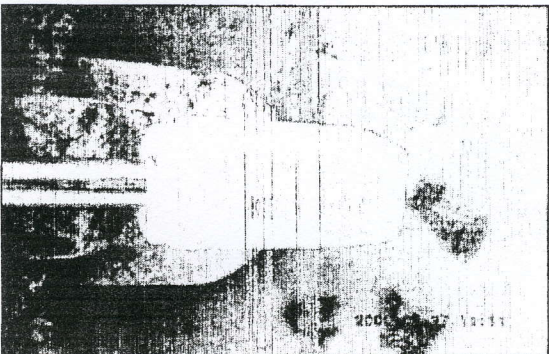
3) Appointed the drum for sampling.



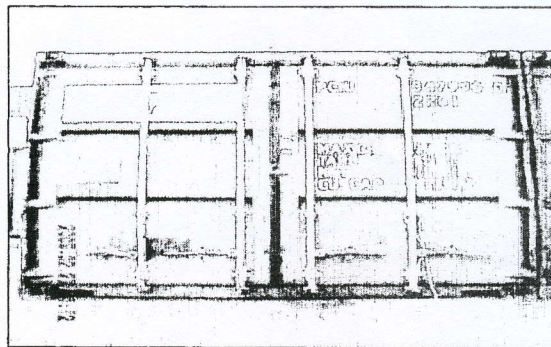
4) Sampling



5) Closed container door & Resealing



6) Container Appearance condition



YOSU, 02ND MARCH 2009

gty / GTY

SGS KOREA CO., LTD.  
OIL, GAS & CHEMICALS SERVICES